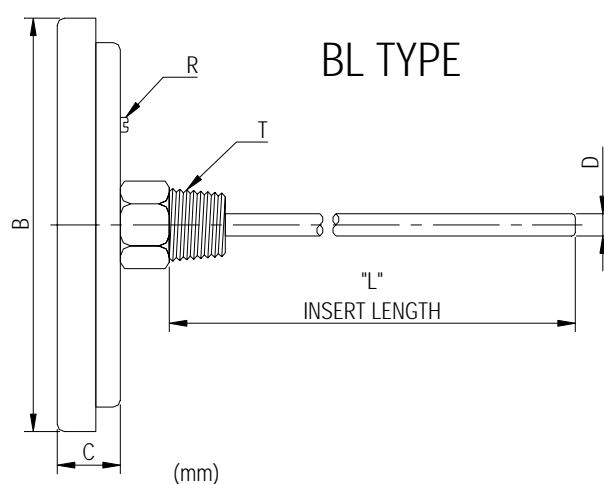
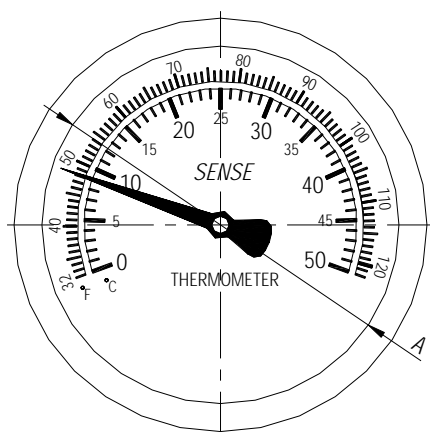


雙金屬溫度計 BI-METAL DIAL THERMOMETERS

BL(T)型 BL TYPE



Note:
When ordering specify
1.Type No.
2.Case Dial.
3.Temperature Range.
4.Connection.
5.Stem Dial.
6.Stem Length.



Type No.	A	B	C	D	L	T
Symbol						
BL2	49	58	14	6	by order	1/4"PT
BL3	70	84	17	6.35		3/8"PT
BL4	100	119	18	8		1/2"PT
BL5	125	141	18	10		3/4"PT
BL6	150	166	18	12		

Specifications.

1. Case Material: 304 、 316 s.s.
2. Case Dial: 1.5" \varnothing 、 2" \varnothing 、 2.5" \varnothing 、 3" \varnothing 、 4" \varnothing 、 5" \varnothing 、 6" \varnothing
3. Stem Material: 304 、 316s.s.
4. Temperature Range: -50 ~ 600°C
5. Windows: Glass.
6. Connection: 1/4"PT 、 3/8"PT 、 1/2" PT 、 3/4"PT 、 1"PT
7. Stem Length: By order.
8. Stem Dial: 6mm 、 6.35mm 、 8mm.
9. Accuracy: $\pm 1\%$ F.S..
10. Type: BL TYPE
11. Applications: Transformer 、 petrochemicals 、 driers 、
foods 、 air conditioning equip 、 boilers & other general industrial uses.

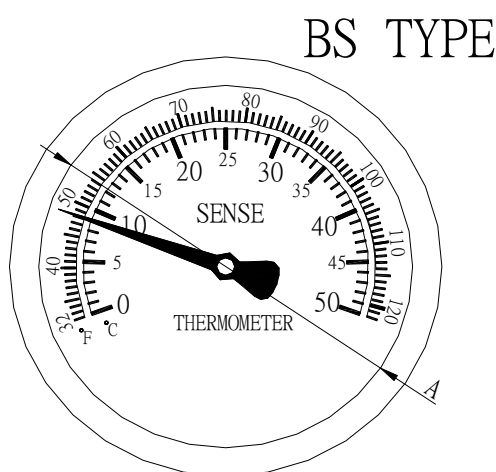


雙金屬溫度計 BI-METAL DIAL THERMOMETERS

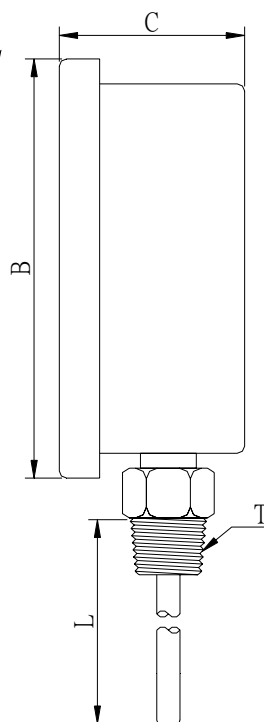
BS(I)型 直立型 BS TYPE



Note:
When ordering specify
1.Type No.
2.Case Dial.
3.Temperature Range.
4.Connection.
5.Stem Dial.
6.Stem Length.



Symbol Type No.	A	B	C	T	L
BS3	70	84	45	1/2"PT	by order
BS4	102	118	48	1/2"PT	by order



Specifications.

1. Case Material: 304 、 316 s.s.
2. Case Dial: 3" \varnothing 、 4" \varnothing 、 6" \varnothing
3. Stem Material: 304 、 316s.s.
4. Temperature Range: -50 ~ 600°C
5. Windows: Glass.
6. Connection: 1/4"PT 、 3/8"PT 、 1/2" PT 、 3/4"PT 、 1"PT
7. Stem Length: By order.
8. Stem Dial: 6mm 、 6.35mm 、 8mm.
9. Accuracy: $\pm 1\%$ F.S..
10. Type: BS TYPE
11. Appliactions: Transformer 、 petrochemicals 、 driers 、 foods 、 air conditioning equip 、 boilers & other general industrial uses.

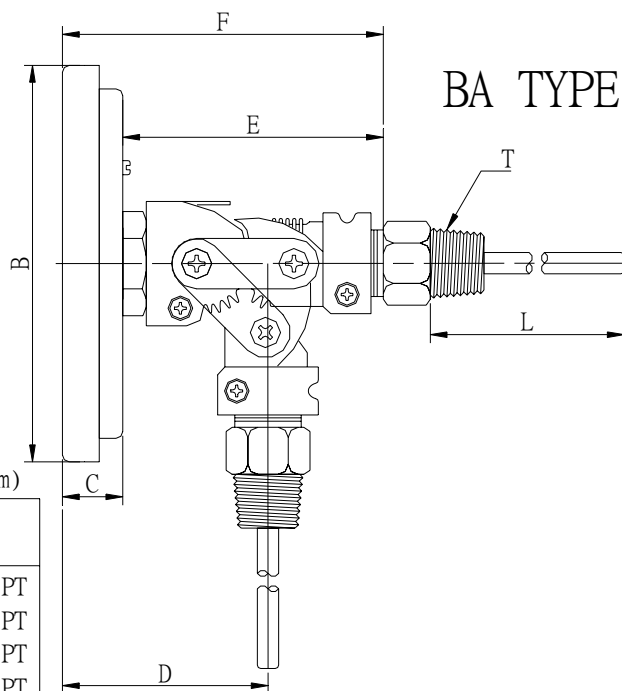
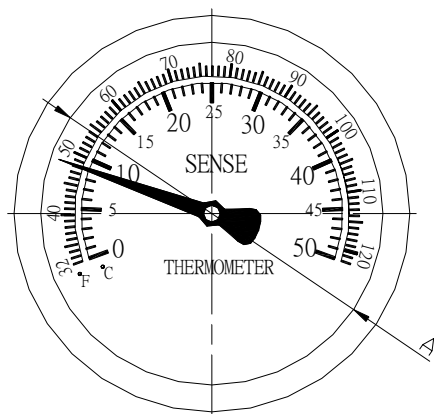


雙金屬溫度計 BI-METAL DIAL THERMOMETERS

BA(A)型 任意角度型 BA TYPE ADJUSTABLE ANGLE



Note:
When ordering specify
1.Type No.
2.Case Dial.
3.Temperature Range.
4.Connection.
5.Stem Dial.
6.Stem Length.



Type No.	A	B	C	D	E	F	T
Symbol							
BA3	75	91	18	60	75	93	1/4"PT
BA4	100	119	18	60	75	93	3/8"PT
BA5	125	141	18	60	75	93	1/2"PT
BA6	150	166	18	60	75	93	3/4"PT

Specifications.

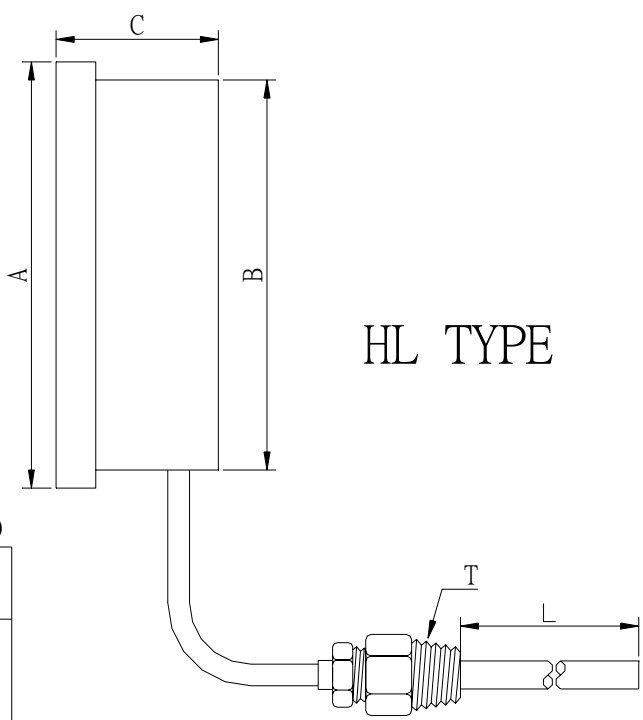
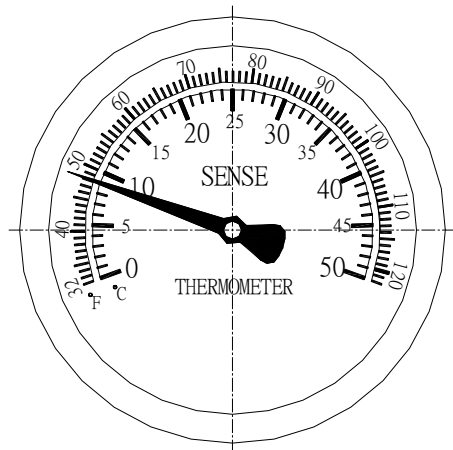
1. Case Material:304SS、316SS
2. Case Dial: 3" Ø、4" Ø、5" Ø、6" Ø
3. Stem Material:316SS
4. Temperature Range:-50~600°C
5. Dial Color:Black figure on non-glaring white dial
6. Hermetic sealed case:Yes.
7. Enclosure class:IP65.
8. Windows:Safety Glass.
9. Connection:1/2" NPT
10. Stem Length:By order.
11. Accuracy:±1°F.S..
12. Stem Dial:6mm、6.35mm、8mm.
13. Type:BA TYPE
14. Applications:Transformer、petrochemicals、driers、
foods、air conditioning equip、boilers & other general industrial uses.



L型液體膨漲式溫度計 INDUSTRIAL THERMOMETERS *HL TYPE STAINLESS STEEL CASE*



Note:
 When ordering specify
 1.Type No.
 2.Case Dial.
 3.Temperature Range.
 4.Connection.
 5.Stem Length.



HL TYPE

(mm)

Type No.	A	B	C	T	L
Symbol					
HS3	84	75	47	1/2"	By order
HS4	118	108	45	3/4"	
HS6	160	148	45		

- Specifications.
- 1.Case Material: STAINLESS STEEL #304、#316
 - 2.Case Length:3"、4"、6"
 - 3.Stem Material: STAINLESS STEEL #304、#316
 - 4.Temperature Range:-50~600°C
 - 5.Lens:Glass.
 - 6.Connection:1/4"PT、3/8"PT、1/2"PT、3/4"PT、1"PT(NPT、BSP)
 - 7.Stem Length:By order.
 - 8.Accuracy:±1%F.S..
 - 9.Type:HL TYPE
 - 10.Options:Special range, connections,lens and stem length.



直結型 液體膨脹式 溫度計 (附電氣接點)

HT-1A、2A TYPE STAINLESS STEEL CASE INDUSTRIAL THERMOMETERS

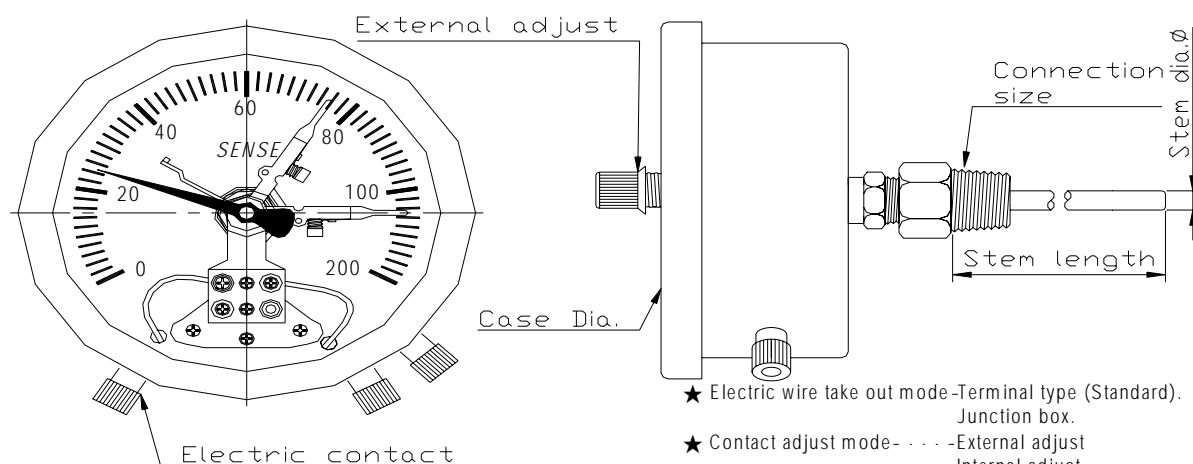


Note:

When ordering specify

- 1.Type No.
- 2.Case Dial.
- 3.Temperature Range.
- 4.Connection.
- 5.Stem Length.
- 6.Stem Dial.
- 7.Contact Type.

HT-2A TYPE



- ★ Electric wire take out mode-Terminal type (Standard).
Junction box.
- ★ Contact adjust mode- -External adjust
Internal adjust
- ★ Resistance load-125V AC 5A
250V AC 5A
30V DC 5A
125V DC 0.4A
- ★ Contact switch- Upper limit type
Lower limit type
Upper & lower limit type

Specifications.

- 1.Case Material: STAINLESS STEEL #304、#316
- 2.Case Dia:3"、4"
- 3.Stem Material: STAINLESS STEEL #304、#316
- 4.Temperature Range:-50~600°C
- 5.Lens:Glass.
- 6.Connection:1/4"PT、3/8"PT、1/2"PT、3/4"PT、1"PT(NPT、BSP)
- 7.Stem Length:By order.
- 8.Accuracy:±1%F.S.
- 9.Type:HT-1A、2A TYPE
- 10.Options:Special range, connections,lens and stem length.



直結型 液體膨脹式 溫度計 (附電氣接點)

HS-1A、2A TYPE STAINLESS STEEL CASE INDUSTRIAL THERMOMETERS

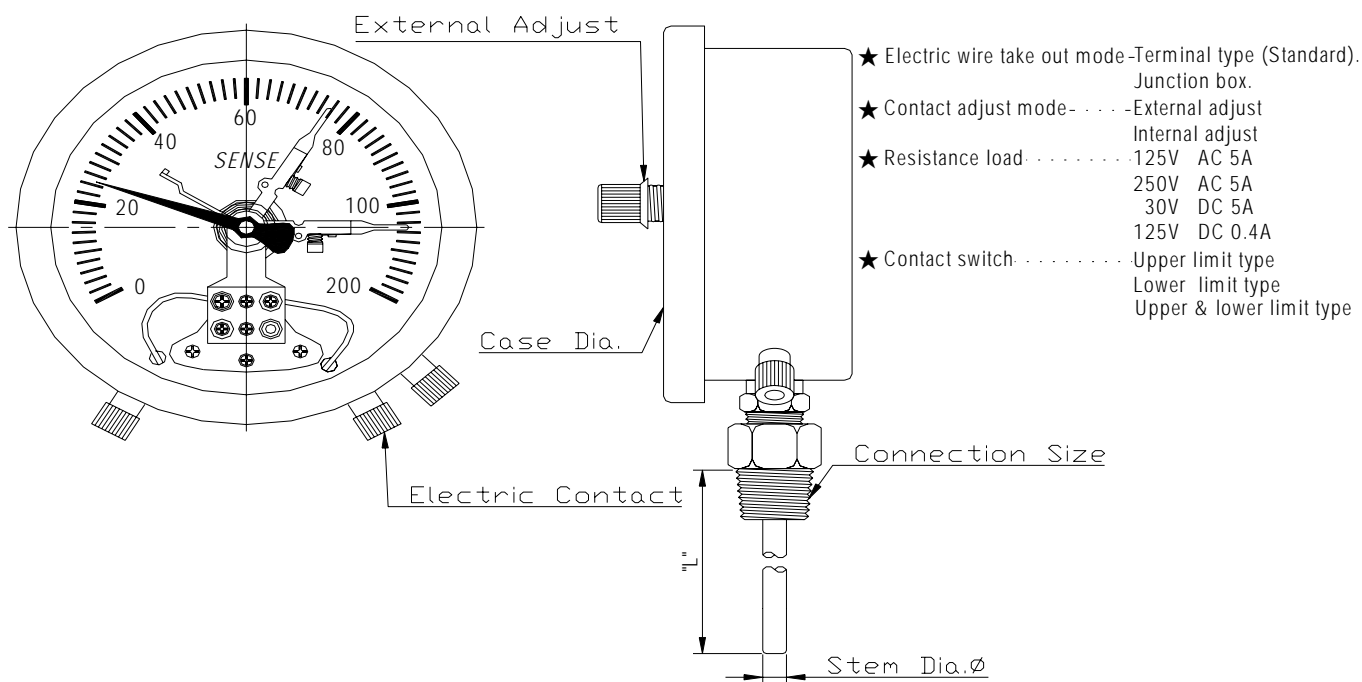


Note:

When ordering specify

- 1.Type No.
- 2.Case Dial.
- 3.Temperature Range.
- 4.Connection.
- 5.Stem Length.
- 6.Stem Dial.
- 7.Contact Type.

HS-2A TYPE



Specifications.

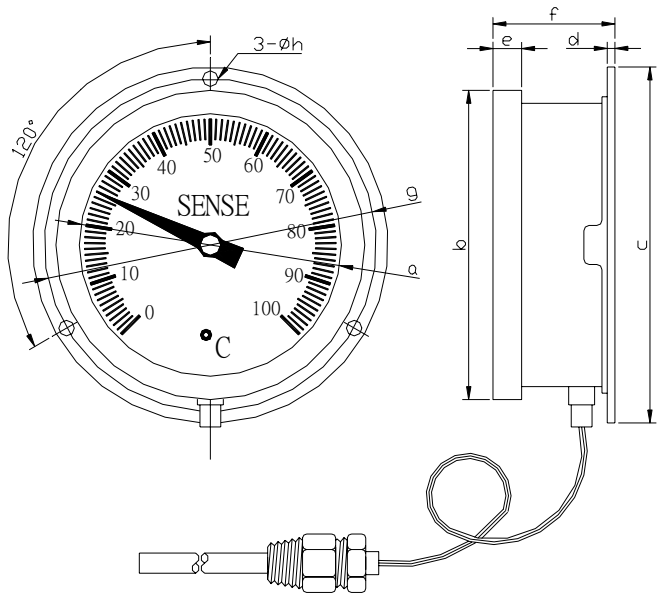
- 1.Case Material:STAINLESS STEEL #304、#316
- 2.Case Dia:3"、4"
- 3.Stem Material:STAINLESS STEEL #304、#316
- 4.Temperature Range:-50~600°C
- 5.Lens:Glass.
- 6.Connection:1/4"PT、3/8"PT、1/2"PT、3/4"PT、1"PT(NPT、BSP)
- 7.Stem Length:By order.
- 8.Accuracy:±1%F.S.
- 9.Type:HS-1A、2A TYPE
- 10.Options:Special range, connections,lens and stem length.



隔測壁掛式溫度計 *LIQUID-FILLED THERMOMETERS* *MW TYPE REMOTE READING*



Note:
 When ordering specify
 1.Type No.
 2.Case Dial.
 3.Temperature Range.
 4.Capillary Length
 5.Connection.
 6.Stem Dial.
 7.Stem Length.



MW4 TYPE	(mm)						
	Type No.	a	b	c	d	e	f
MW3 TYPE	Symbol	a	b	c	d	e	f
	MW4	101	119	137	3	11	47
	MW3	70	85	101	1	11	47

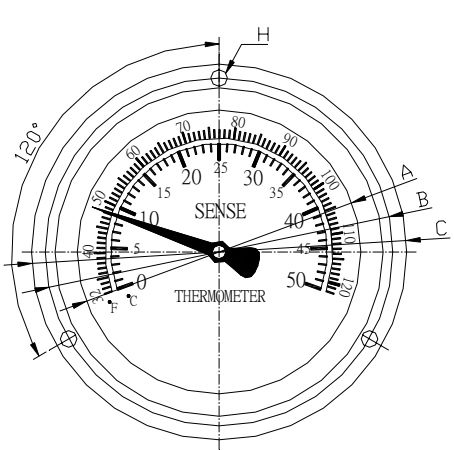
- Specifications.
- 1.Case Material:304 、 316 s.s.
 - 2.Case Dial:3" Ø 、 4" Ø 、 6" Ø
 - 3.Stem Material:304 、 316s.s.
 - 4.Temperature Range:-50~600°C
 - 5.Capillary Length:STD 3M.
 - 6.Windows:Glass.
 - 7.Connection:1/4"PT 、 3/8"PT 、 1/2" PT 、 3/4"PT 、 1"PT(NPT 、 BSP)
 - 8.Stem Length:By order.
 - 9.Accuracy:± 1%F.S..
 - 10.Type:MW3 、 MW4 、 MW6 TYPE
 - 11.Appliactions:Transformer 、 petrochemicals 、 driers 、 foods 、 air conditioning equip 、 boilers & other general industrial uses.



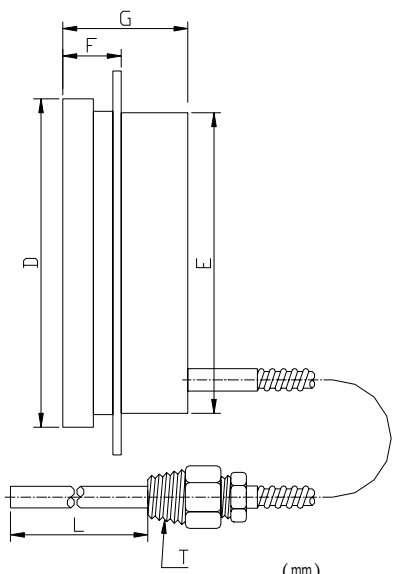
隔測埋入式溫度計 *LIQUID-FILLED THERMOMETERS* *MF TYPE REMOTE READING*



Note:
 When ordering specify
 1.Type No.
 2.Case Dial.
 3.Temperature Range.
 4.Capillary Length
 5.Connection.
 6.Stem Dial.
 7.Stem Length.



MF TYPE



Type No.	A	B	C	D	E	F	G	H	T	L
Symbol										
MF3	70	90	100	84	75	16	47	6	1/2"	By order
MF4	102	124	139	118	108	22	45	6	3/4"	
MF6	140	178	196	160	148	18	45	6		

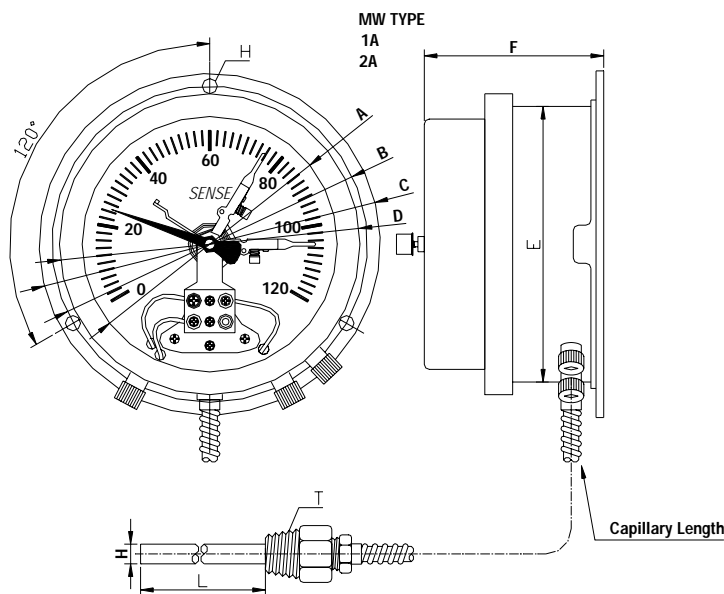
- Specifications.
- 1.Case Material:304 、 316 s.s.
 - 2.Case Dial:3" Ø 、 4" Ø 、 6" Ø
 - 3.Stem Material:304 、 316s.s.
 - 4.Temperature Range:-50~600°C
 - 5.Windows:Glass.
 - 6.Capillary Length:STD 3M.
 - 7.Connection:1/4"PT 、 3/8"PT 、 1/2" PT 、 3/4"PT 、 1"PT(NPT 、 BSP)
 - 8.Stem Length:By order.
 - 9.Accuracy:± 1%F.S..
 - 10.Type:MF3 、 MF4 、 MF6 TYPE
 - 11.Appliactions:Transformer 、 petrochemicals 、 driers 、 foods 、 air conditioning equip 、 boilers & other general industrial uses.



隔測壁掛式溫度計(附接點) *LIQUID-FILLED THERMOMETERS* *MW-1A、2A型 MW-1A、2A TYPE REMOTE READING*



Note:
 When ordering specify
 1.Type No.
 2.Case Dial.
 3.Temperature Range.
 4.Capillary Length
 5.Connection.
 6.Stem Dial.
 7.Stem Length.



(mm)

Type No.	A	B	C	D	E	F	H	T	L
Symbol									
MW 1A-2A	102	124	139	118	108	88	12	1/2"	By order

Specifications.

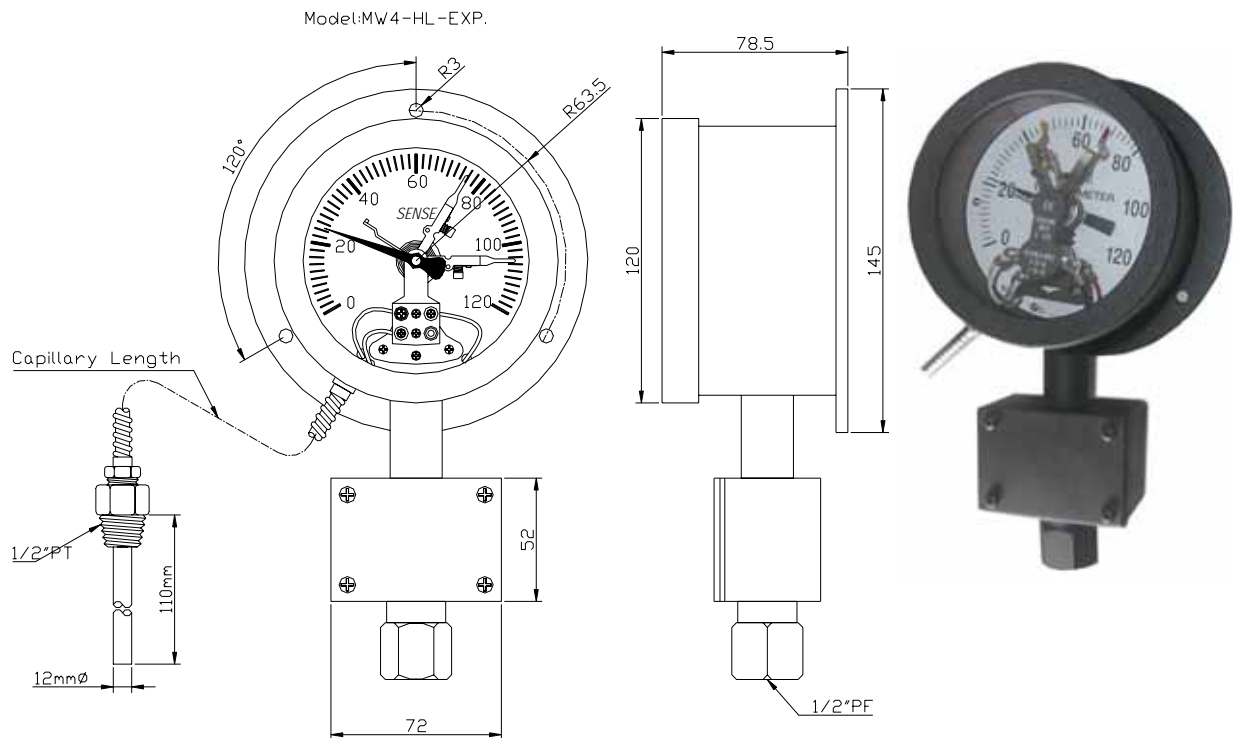
- 1.Case Material:304、316 s.s.
- 2.Case Dial:3" ϕ 、4" ϕ 、6" ϕ
- 3.Stem Material:304、316s.s.
- 4.Temperature Range:-50~600°C
- 5.Windows:Glass.
- 6.Capillary Length:STD 3M.
- 7.Connection:1/4"PT、3/8"PT、1/2" PT、3/4"PT、1"PT(NPT、BSP)
- 8.Stem Length:By order.
- 9.Accuracy:±1%F.S..
- 10.Type:MW-1A、MW-2A TYPE
- 11.Appliactions:Transformer、petrochemicals、driers、foods、air conditioning equip、boilers & other general industrial uses.



隔測壁掛型 液體膨脹式 溫度計 (附電氣接點)

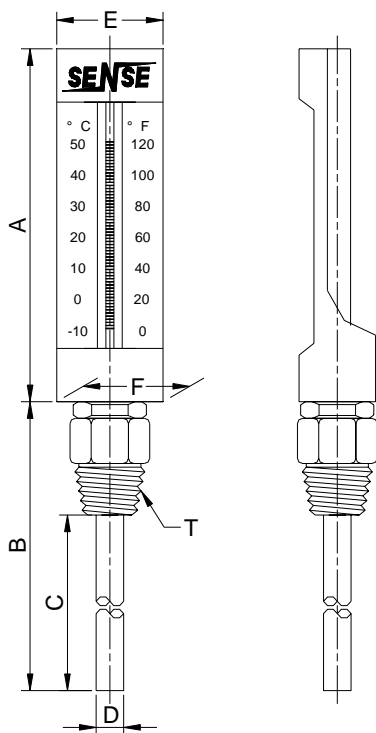
MW4-HL-EXP. TYPE STAINLESS STEEL CASE INDUSTRIAL THERMOMETERS

Explosion-protected type



Specifications.

1. Case Material: #304
2. Case Dia: 4"
3. Stem Material: STAINLESS STEEL #304
4. Temperature Range: 0 ~ 120°C
5. Capillary Length: STD. 3M
6. Lens: Tempered glass.
7. Connection: 1/2" PT
8. Stem Length: By order.
9. Electric wire take out mode: Junction box.
10. Contact adjust mode: Internal adjust
11. Resistance load: 250V AC 5A
12. Contact switch: Upper & lower limit type
13. Accuracy: $\pm 1\% F.S.$
14. Type: MW4-HL-EXP. TYPE
15. Options: Special range, connections, lens and stem length.



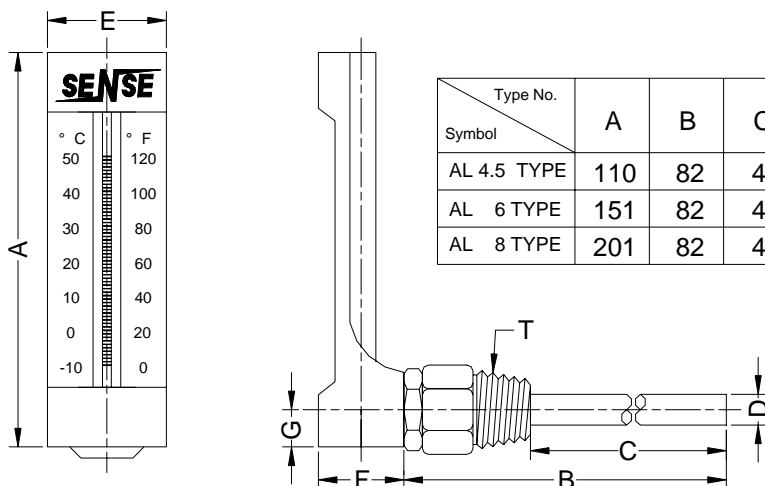
AS TYPE

(mm)

Type No. Symbol	A	B	C	D	E	F	T	
AS 4.5	110	82	49	10	32	32	1/2"	3/4"
AS 6	150	82	49	10	35	35	1/2"	3/4"
AS 8	199	82	49	10	35	35	1/2"	3/4"

AL TYPE

(mm)



Type No. Symbol	A	B	C	D	E	F	G	T	
AL 4.5 TYPE	110	82	49	10	35	29	14	1/2"	3/4"
AL 6 TYPE	151	82	49	10	35	29	11	1/2"	3/4"
AL 8 TYPE	201	82	49	10	35	29	14	1/2"	3/4"

SPECIFICATIONS:

- 1.SCALE LENGTH: 4½"(110mm) , 6"(150mm) , 8"(200mm)
- 2.TEMP. RANGE: -30 ~ 600°C/°F
- 3.CASE: Oxidized aluminum alloy.
- 4.LENS: Glass.
- 5.CONNECTION: 1/2"NPT/BSP
Straight or angle form
- 6.TUBE: Glass tube , magnifying red or blue liquid
- 7.OTHER OPTION UPON REQUEST



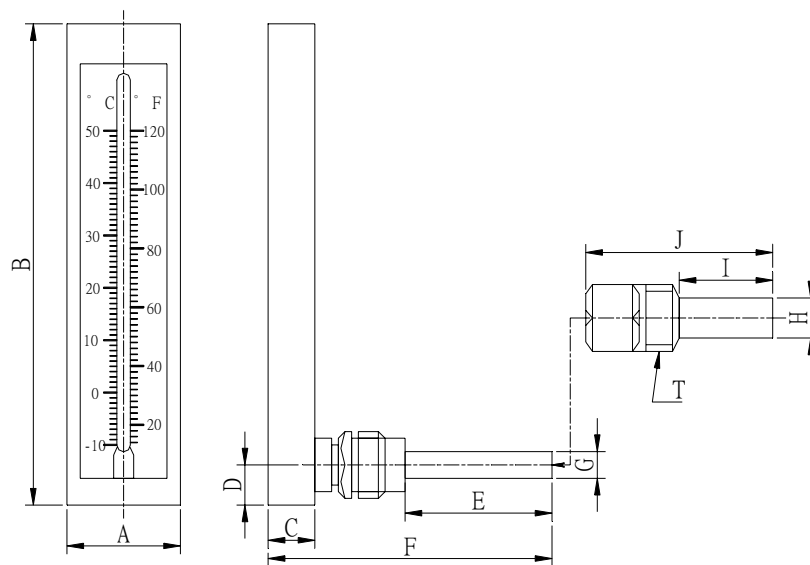


工業用 角板型溫度計 INDUSTRIAL THERMOMETERS TL型 TL TYPE GLASS TUBE-PLASTIC CASE.



Note:
When ordering specify
1.Type No.
2.Case Length
3.Temperature Range.
4.Connection.
5.Stem Length.

TL TYPE



(mm)

Type No. Symbol	A	B	C	D	E	F	G	H	I	J	T
TL TYPE	38	164	17	12	50	93	10	13	32	64	1/2"

Specifications.

- 1.Case Material:Plastic Lens:Glass.
- 2.Scale Length:4 1/2"(110mm) 、 6"(150mm) 、 8"(200mm).
- 3.Stem Material:Brass 、 #316ss 、 electroplate
- 4.Temperature Range:-10~110°F 、 -20~120°F 、 0~160°F 、 30~240°F 、 50~400°F
-40~50°C 、 -20~45°C 、 0~80°C 、 0~160°C 、 0~200°C
-40~110°F & °C 、 -5~50°F & °C 、 0~120°F & °C 、 0~150°F & °C 、 30~240°F & °C
- 5.Tube:Glass tube 、 magnifying red or blue liquid.
- 6.Connection:1/2" NPT(NPT 、 BSP)
- 7.Stem Length:By order.
- 8.Accuracy:± 1%F.S..
- 9.Type:TS TYPE
- 10.Options:Special range, connections,lens and stem length.



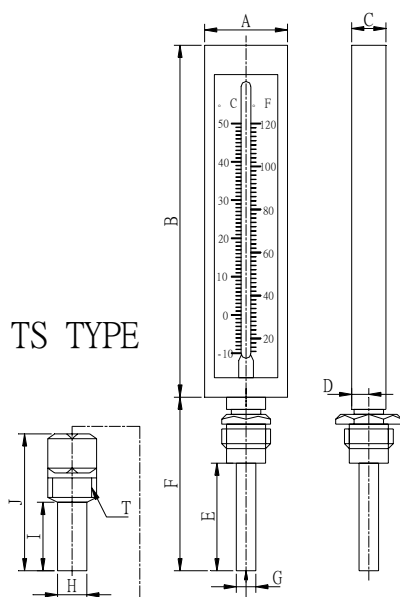
工業用 角板型溫度計 INDUSTRIAL THERMOMETERS TS型 TS TYPE GLASS TUBE-PLASTIC CASE.



Note:

When ordering specify

- 1.Type No.
- 2.Case Length
- 3.Temperature Range.
- 4.Connection.
- 5.Stem Length.



Type No. Symbol	A	B	C	D	E	F	G	H	I	J	T
TS TYPE	38	164	17	10	50	76	10	13	32	64	1/2"

(mm)

Specifications.

- 1.Case Material:Plastic
- 2.Scale Length:4 1/2"(110mm) 、 6"(150mm) 、 8"(200mm).
- 3.Stem Material:Brass 、 #316ss 、 electroplate
- 4.Temperature Range: -10~110°F 、 -20~120°F 、 0~160°F 、 30~240°F 、 50~400°F
-40~50°C 、 -20~45°C 、 0~80°C 、 0~160°C 、 0~200°C
-40~110°F & °C 、 -5~50°F & °C 、 0~120°F & °C 、 0~150°F & °C 、 30~240°F & °C

5.Lens:Glass.

6.Tube:Glass tube 、 magnifying red or blue liquid.

7.Connection:1/2" NPT(NPT 、 BSP)

8.Stem Length:By order.

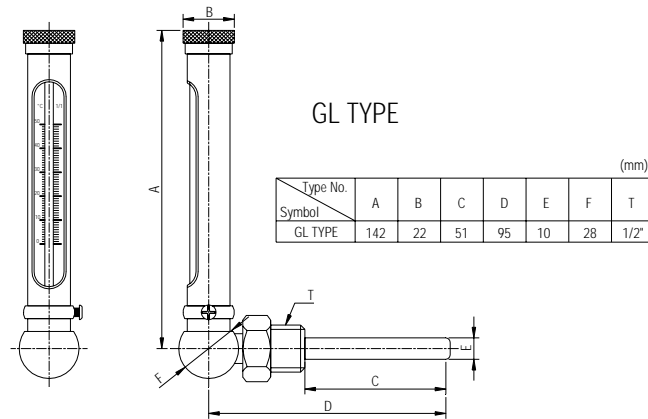
9.Accuracy:± 1%F.S..

10.Type:TS TYPE

11.Options:Special range, connections,lens and stem length.

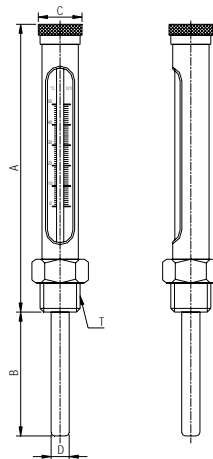


工業用圓筒型溫度計 INDUSTRIAL THERMOMETERS GS、GL型 GS、GL TYPE PLATED BRASS CASE



GS TYPE

Type No.	A	B	C	D	T
GS TYPE	150	63	28	10	1/2"



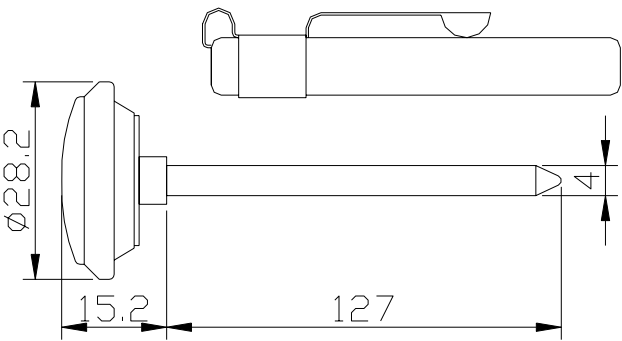
Note:
When ordering specify
1.Type No.
2.Case Length
3.Temperature Range.
4.Connection.
5.Stem Length.

Specifications.

- 1.Case Material:Plated brass case.
- 2.Case Length:4 1/2"(110mm) 、6"(150mm) 、8"(200mm).
- 3.Stem Material:Brass 、#316ss 、electroplate
- 4.Temperature Range:-50~600°C
- 5.Lens:Glass.
- 6.Tube:Glass tube 、magnifying red or blue liquid.
- 7.Connection:1/4"PT 、3/8"PT 、1/2" PT 、3/4"PT 、 1"PT(NPT 、BSP)
- 8.Stem Length:By order.
- 9.Accuracy:± 1%F.S..
- 10.Type:GS TYPE 、GL TYPE
- 11.Options:Special range, connections,lens and stem length.



BI-Metal Thermometers Pocket Test - - - -1"



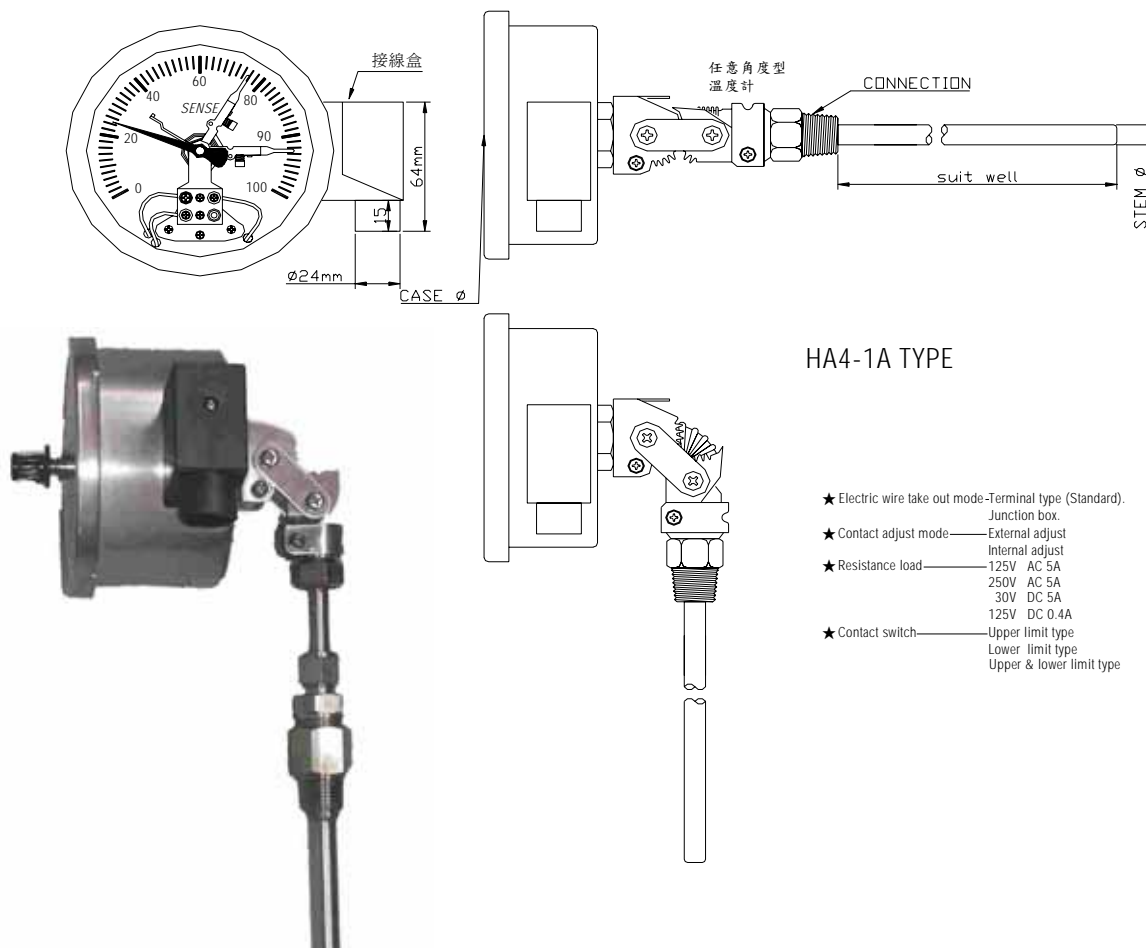
SPECIFICATIONS:	
Case and bezel:	SUS 304 stainless steel, hermetically sealed case
Lens:	Plastic
Pointer:	Aluminum, black or red painted
Dial:	Aluminum, white background, black graduation and lettering
Stem:	Sus304 stainless steel 4mm diameter, 5" stem length is standard
Accuracy:	+/-1.0%
Pocket sheath:	Plastic
Clip:	Sus304
Temperature range	-30~50、-40~70、-20~110、0~100、10~150、0~200、0~250、0~300℃
Range	(Other ranges available)
Options:	Special range, stem and lens



多角度型液體膨脹式溫度計 (附電氣接點)

LIQUID-FILLED THERMOMETERS

HA-1A1B TYPE EVERY ANGLE



HA4-1A TYPE

- ★ Electric wire take out mode—Terminal type (Standard).
Junction box.
- ★ Contact adjust mode—External adjust
Internal adjust
- ★ Resistance load—125V AC 5A
250V AC 5A
30V DC 5A
125V DC 0.4A
- ★ Contact switch—Upper limit type
Lower limit type
Upper & lower limit type

Specifications.

1. Case Material: 304 、 316s.s.
2. Case Dial: 4" Ø 、 5" Ø 、 6" Ø
3. Stem Material: 316s.s.
4. Stem O.D.: 6 、 8 、 10 、 12mm.
5. Temperature Range: -50 ~ 600°C
6. Windows: Safety Glass.
7. Enclosure Class: IP67.
8. Connection: 1/4" PT 、 3/8" PT 、 1/2" PT 、 3/4" PT 、 1" PT (NPT 、 BSP)
9. Stem Length: By order.
10. Accuracy: $\pm 1\% \text{F.S.}$
11. Type: HA-1A1B TYPE
12. Applications: Transformer 、 petrochemicals 、 driers 、 foods 、 air conditioning equip 、 boilers & other general industrial uses.

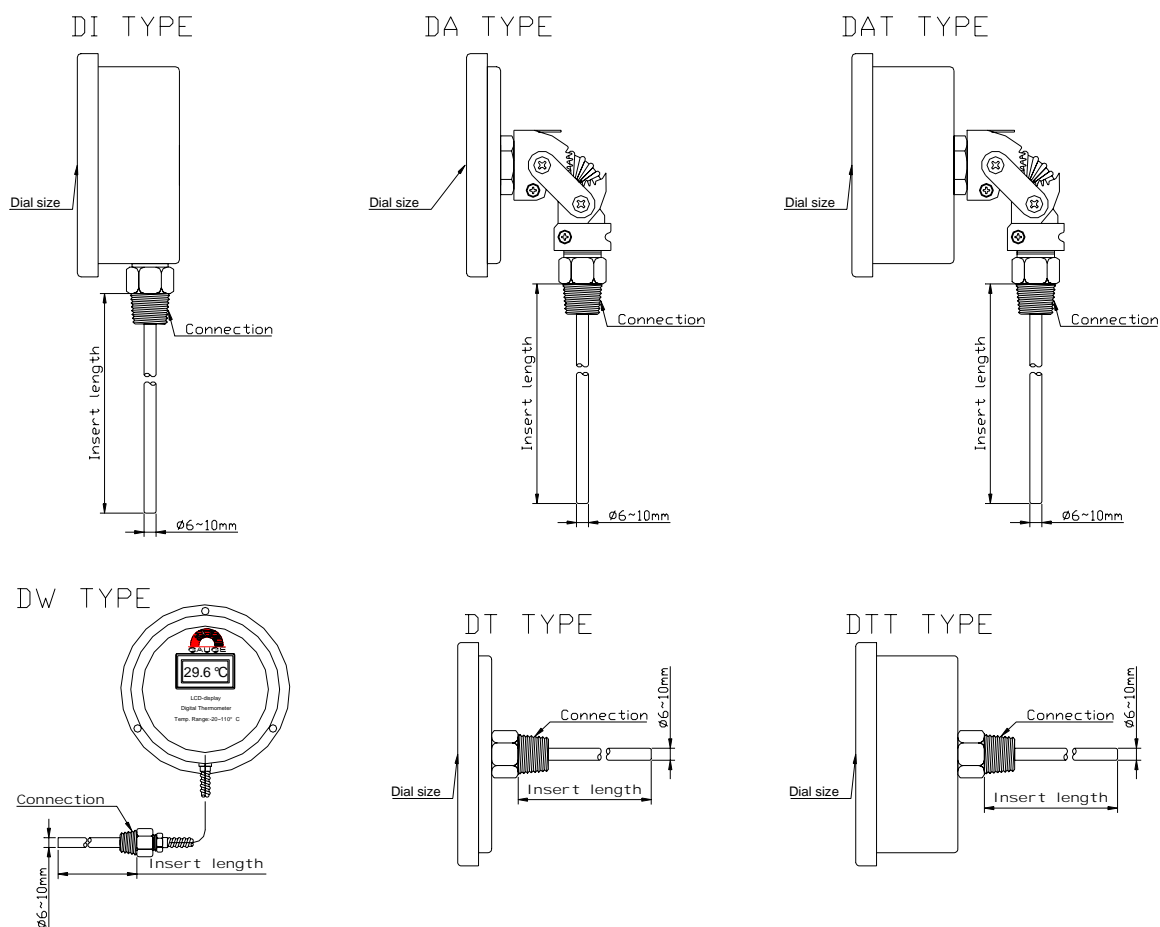
Note:

When ordering specify

1. Type No.
2. Case Dial.
3. Temperature Range.
4. Contact type
5. Connection.
6. Stem Dial.
7. Stem Length.

LCD-display Digital Thermometer

LCD series



Specifications.

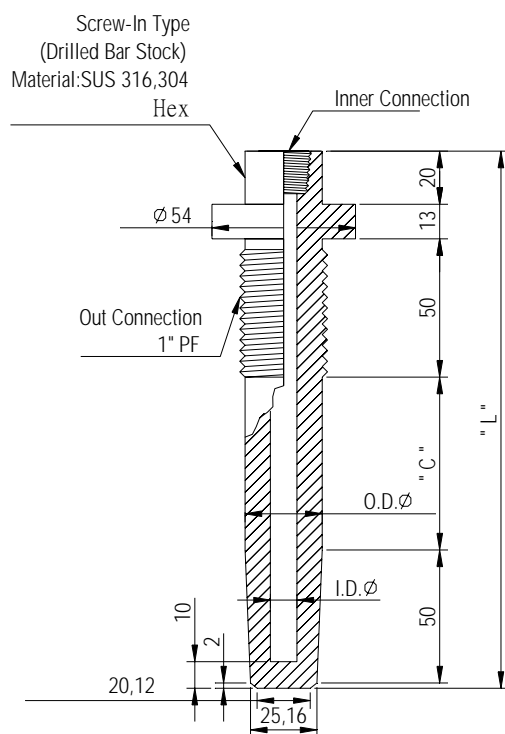
- 15. Models:DT 、 DTT 、 DI 、 DA 、 DAT Type
- 16. Case Material:304SS 、 316SS
- 17. Case Dial: 3" \varnothing 、 4" \varnothing
- 18. Stem Material:316SS
- 19. Temperature Range:-50 ~ 150°C
- 20. Ambient temperature:60°C
- 21. Enclosure class:Weather Proof
- 22. Connection:1/2" NPT
- 23. Stem Length:By order.
- 24. Accuracy: $\pm 0.5\%$ F.S.(linear deviation: $\pm 1\%$ of F.S.)
- 25. Stem Dial:6.35 ~ 10mm





THERMOWELL

SCREW-IN TYPE (Drilled Bar Stock)



Specifications.

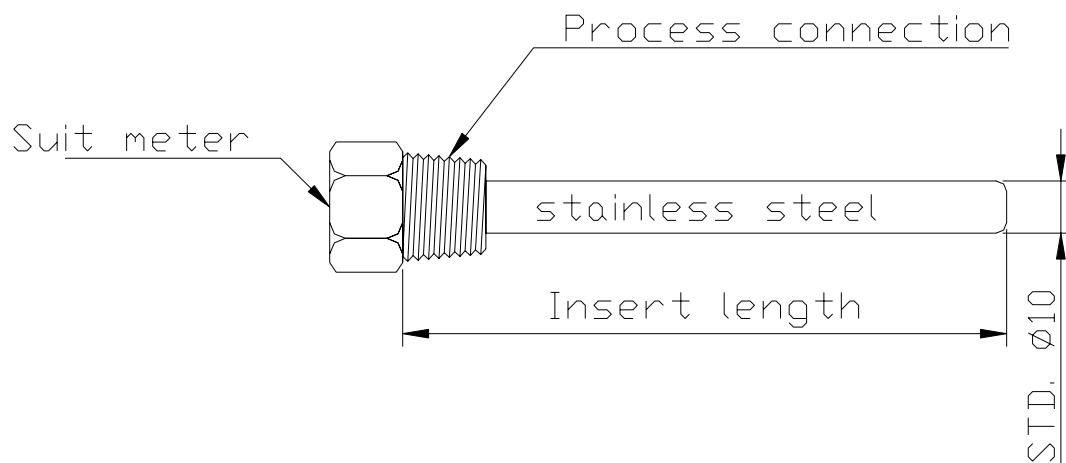
1. Structure : Solid Drilled From Stockbar
2. Thermowell Insert Length: "C" 、 "L" 、 By Order
3. Thermowell I.D.: Stem O.D.+1mm 、 By Order
4. Thermowell O.D.: 18mm 、 29mm 、 By Order
5. Stem Material: 316 S.S. 304S.S.
6. Inner Connection: 1/2"NPT 、 By Order
7. Process Connection: 1"PF 、 By Order



THERMOWELL

Threaded Type (Straight)

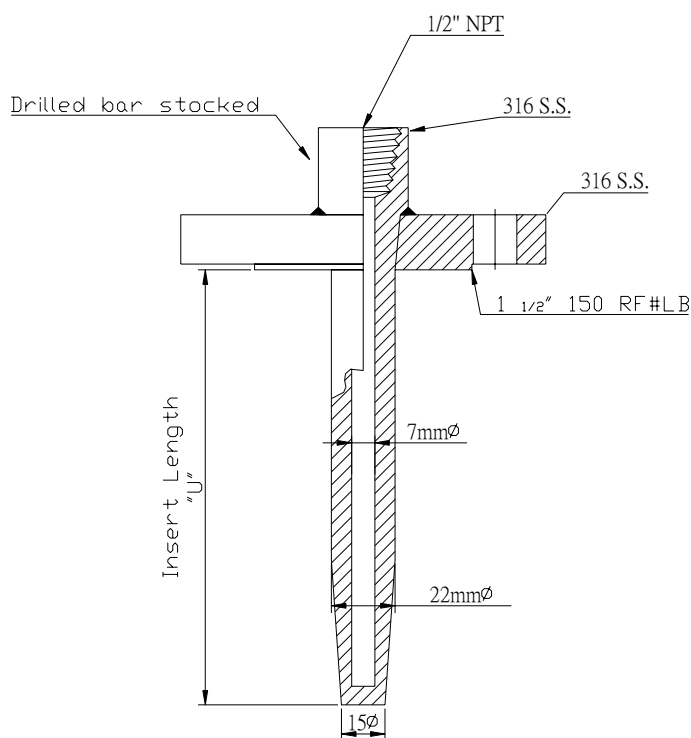
- Threaded, welded, flanged, and vanstone types
- For many types of thermometers and thermocouples
- Lagging or built up extensions available
- Brass, carbon steel, titanium, tantalum, and free machining carbon steel
- Drilled from solid piece bar stock
- Test thermowells with cast iron plugs and chains
- 48-hour delivery available on nonstandard items



- Thermowell material
- Brass
- Steel
- Stainless Steel (STD.)
- Monel
- Inconel,
- Hastelloy



法蘭式 保護管 *FLANGE THERMOWELL* 錐型 *TAPER TYPE*



Specifications.

1. Structure : 22mmx15mmØ Solid Drilled From Stockbar
2. Insert Length: By Order
3. Well O.D.: By Order
4. Stem Material: 316 S.S. 304S.S.
5. Conn. Size & Rating: By Order



Mechanism & Circurt Examples of ElectricContactor

Thermometers with contactor have made possible the automation of temperature control and Increased the safety of energy consuming.

Electric contracts are switching mechanisms designed to be actuated by travel of thermometer

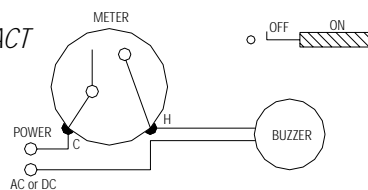
Indicating pointer points where the switch will open or close are regulated by adjustable(or fixed)

“set” hands.

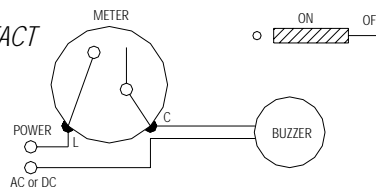
Thermometers equipped with this optional feature will turn alarm signals “on” or “off”,as each set Hand switching point is reached.

And where appropriate relays are incorporated in the installation circuit, contacts will turn electric Motors, heaters,valves.....“on” or “off”.

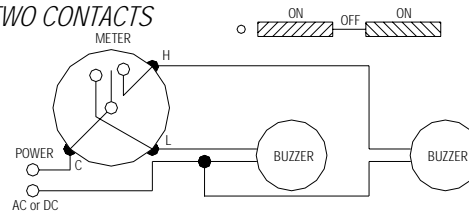
A. UPPER LIMIT ONE CONTACT



B. LOWER LIMIT ONE CONTACT



C. UPPER & LOWER LIMIT TWO CONTACTS



Interpolation Factors

°C		°F		°C		°F	
0.56	1	1.8	3.33	6	10.8		
1.11	2	3.6	3.89	7	12.6		
1.67	3	5.4	4.44	8	14.4		
2.22	4	7.2	5.00	9	16.2		
2.78	5	9.0	5.56	10	18.0		



Temperature Conversion Table

-459.4~0			0~49			50~100			100~490			500~1000		
°C		°F	°C		°F	°C		°F	°C		°F	°C		°F
-273	-459.4		-17.8	0	32.0	10.0	50	122.0	38	100	212	260	500	932
-268	-450		-17.2	1	33.8	10.6	51	123.8	43	110	230	266	510	950
-262	-440		-16.7	2	35.6	11.1	52	125.6	49	120	248	271	520	968
-257	-430		-16.1	3	37.4	11.7	53	127.4	54	130	266	277	530	986
-251	-420		-15.6	4	39.2	12.2	54	129.2	60	140	284	282	540	1004
-246	-410		-15.0	5	41.0	12.8	55	131.0	66	150	302	288	550	1022
-240	-400		-14.4	6	42.8	13.3	56	132.8	71	160	320	293	560	1040
-234	-390		-13.9	7	44.6	13.9	57	134.6	77	170	338	299	570	1058
-229	-380		-13.3	8	46.4	14.4	58	136.4	82	180	356	304	580	1076
-223	-370		-12.8	9	48.2	15.0	59	138.2	88	190	374	310	590	1094
-218	-360		-12.2	10	50.0	15.6	60	140.0	93	200	392	316	600	1112
-212	-350		-11.7	11	51.8	16.1	61	141.8	99	210	410	321	610	1130
-207	-340		-11.1	12	53.6	16.7	62	143.6	100	212	413	327	620	1148
-201	-330		-10.6	13	55.4	17.2	63	145.4	104	220	428	332	630	1166
-196	-320		-10.0	14	57.2	17.8	64	147.2	110	230	446	338	640	1184
-190	-310		-9.44	15	59.0	18.3	65	149.0	116	240	464	343	650	1202
-184	-300		-8.89	16	60.8	18.9	66	150.8	121	250	482	349	660	1220
-179	-290		-8.33	17	62.6	19.4	67	152.6	127	260	500	354	670	1238
-173	-280		-7.78	18	64.4	20.0	68	154.4	132	270	518	360	680	1256
-169	-273	-459.4	-7.22	19	66.2	20.6	69	156.2	138	280	536	366	690	1274
-168	-270	-454	-6.67	20	68.0	21.1	70	158.0	143	290	554	371	700	1292
-162	-260	-436	-6.11	21	69.8	21.7	71	159.8	149	300	572	377	710	1310
-157	-250	-418	-5.56	22	71.6	22.2	72	161.6	154	310	590	382	720	1328
-151	-240	-400	-5.00	23	73.4	22.8	73	163.4	160	320	608	388	730	1346
-146	-230	-382	-4.44	24	75.2	23.3	74	165.2	166	330	626	393	740	1364
-140	-220	-364	-3.89	25	77.0	23.9	75	167.0	171	340	644	399	750	1382
-134	-210	-346	-3.33	26	78.8	24.4	76	168.8	177	350	662	404	760	1400
-129	-200	-328	-2.78	27	80.6	25.0	77	170.6	182	360	680	410	770	1418
-123	-190	-310	-2.22	28	82.4	25.6	78	172.4	188	370	698	416	780	1436
-118	-180	-292	-1.67	29	84.2	26.1	79	174.2	193	380	716	421	790	1454
-112	-170	-274	-1.11	30	86.0	26.7	80	176.0	199	390	734	427	800	1472
-107	-160	-256	-0.56	31	87.8	27.2	81	177.8	204	400	752	432	810	1490
-101	-150	-238	0	32	89.6	27.8	82	179.6	210	410	770	438	820	1508
-95.6	-140	-220	0.56	33	91.4	28.3	83	181.4	216	420	788	443	830	1526
-90.0	-130	-202	1.11	34	93.2	28.9	84	183.2	221	430	806	449	840	1544
-84.4	-120	-184	1.67	35	95.0	29.4	85	185.0	227	440	824	454	850	1562
-78.9	-110	-166	2.22	36	96.8	30.0	86	186.8	232	450	842	460	860	1580
-73.3	-100	-148	2.28	37	98.6	30.6	87	188.6	238	460	860	466	870	1598
-67.8	-90	-130	3.33	38	100.4	31.1	88	190.4	243	470	878	471	880	1616
-62.2	-80	-112	3.89	39	102.2	31.7	89	192.2	249	480	896	477	890	1634
-56.7	-70	-94	4.44	40	104.0	32.2	90	194.0	254	490	914	482	900	1652
-51.1	-60	-76	5.00	41	105.8	32.8	91	195.8				488	910	1670
-45.6	-50	-58	5.56	42	107.6	33.3	92	197.6				493	920	1688
-40.0	-40	-40	6.11	43	109.4	33.9	93	199.4				499	930	1706
-34.4	-30	-22	6.67	44	111.2	34.4	94	201.2				504	940	1724
-28.9	-20	-4	7.72	45	113.0	35.0	95	203.0				510	950	1742
-23.3	-10	14	7.78	46	114.8	35.6	96	204.8				516	960	1760
-17.8	0	32	8.33	47	116.6	36.1	97	206.6				521	970	1778
			8.89	48	118.4	36.7	98	208.4				527	980	1796
			9.44	49	120.2	37.2	99	210.2				532	990	1814
						37.8	100	212.0				538	1000	1832

$$t \text{ } ^\circ\text{C} = \left(\frac{9.t}{5} \pm 32\right) \text{ } ^\circ\text{F}$$

$$t \text{ } ^\circ\text{F} = \frac{5.(t-32)}{9} \text{ } ^\circ\text{C}$$