

PRESSURE GAUGE WITH ALARM CONTACT, DRY (TRANSPARENT HOOD TYPE)

MODEL: EPG-100-D (725.61) LOWER BACK MOUNT

SPECIFICATIONS

Electrical alarm contacts make or break an electric control circuit depending on the position of the instrument's pointer. Points of contact actuation are adjustable over the full extension of the scale graduation. The gauges feature a hub in the window for an adjustment key. Contact actuation is made when there is an upper or lower deviation of the set desired value by the instrument pointer.



EPG-100

GENERAL CHARACTERISTICS

NOMINAL DIAMETERS (mm)

100 (DN100)

ACCURACY

±1,0% F.S. Accuracy

POINTER

Black Aluminum

RING

Bayonet Lock, Chrome-Plated Steel with Antitampering Sealing

RANGES

Vacuum, Compound, and upto 1000 kg

CALIBRATION PRESSURE (PC)

Refer to Order Specifications

ALARM CONTACTS

Adjustable Contacts with Antitampering Sealing:
-On Air with Magnetic Block (80%Ag-20%Ni, 10µm Gold-Plated)
-Maximum Contact Rating with Non-Inductive Ohmic Load, Filled: 30W / 50VA, Maximum 1A
-Contact Available: Up to 4 Snap Action Non Inductive Contacts

WINDOW

Transparent PC Lens

MOVEMENT

Stainless Steel AISI 430 from Germany

DIAL

White Aluminum with Black Markings and Colors Sectors as per Customer's Specification

WEIGHT

1.0 KG

TECHNICAL FEATURES

AMBIENT TEMPERATURE

-20...+60°C

CASE

Chrome-Plated Steel

PROTECTION DEGREE

None

STORAGE TEMPERATURE

-50...+60°C

PROCESS CONNECTION

Standard Brass 1/2" PT
Optional AISI 316 M20 x 1,5
G1/2B Thread (EN 837), SW22, 1/2" PT

BOURDON TUBE

Stainless Steel AISI 316 from Germany

ELECTRICAL CONNECTION

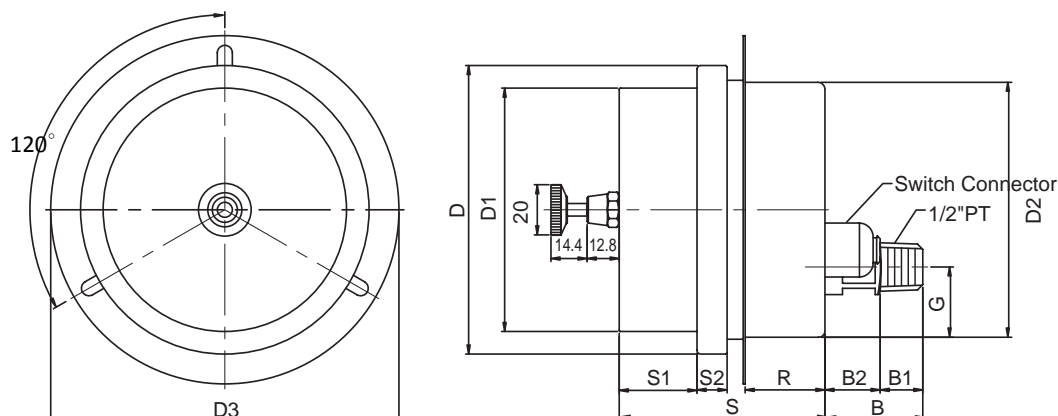
1.5-Meter Wiring

OPTIONS & ACCESSORIES

Junction Box on the Left or Right

Junction Box – PG13,5

DIMENSIONS (MM)



型 號	D	D1	D2	D3	B	B1	B2	S	S1	S2	S3	R	G	H
EPG-100-D IPG-100-D	115	97	101.5	138.8	39	16	23	82	31	12		32	28	

POWER RATINGS: MAXIMUM CONTACT RATING

MAXIMUM CONTACT RATING WITH NON INDUCTIVE (OHMIC LOAD)	MAGNETIC SNAP-ACTION CONTACT	
	GAS FILLED GAUGES	LIQUID FILLED GAUGES
Maximum Voltage (MSR) U_{eff}	250 V	250 V
Current Ratings:		
Make Rating:	1,0 A	1,0 A
Break Rating:	1,0 A	1,0 A
Continuous Load	0,6 A	0,6 A
Maximum Load	30 W 50 VA	20 W 20 VA

RECOMMENDED CONTACT RATINGS

VOLTAGE (DIN IEC 38) DC / AC	MAGNETIC SNAP-ACTION CONTACT				
	GAS FILLED GAUGES			LIQUID FILLED GAUGES	
V	Ohmic Load		Inductive Load $\cos\phi > 0,7$ mA	Ohmic Load	
	DC mA	AC mA		DC mA	AC mA
230	100	120	65	65	90
110	200	240	130	130	180
48	300	450	200	190	330
24	400	600	250	250	450

Note: Please refer to the user's manual for detailed maximum power ratings and recommendations.