

The EEPG-50/63 Pressure Gauge with Switch is manufactured under the FTB-developed and Patent-Pending Technology for the core contact system of the gauge using the "non-contact" sensing system as the major device to keep the switchings more smooth, accurate, quick, and thus make the life-span longer. The major benefits and features of EEPG-50/63 are specified below.



Features

- Pressure gauge with non-contact sensor works best for the applications where pressure switches are necessary. Because of the benefits of a combination of a high quality pressure gauge with FTB Patent-Pending "non-contact" Technology, the EEPG-50/63 performs merely no tolerances for the pressures setup on EEPG-50/63. This is because of the integration of a non-contact sensor built inside the quality FTB pressure gauge to minimize the tolerances for both devices.
- Non-Contact Sensor built inside the quality FTB pressure gauge provides a perfect system without the concerns of the contact burning phenomenon for contact type switch.
- Quick operating and releasing time to meet the requirements for quick operations from the applications such as rubber injection machines.
- Optional stainless steel AISI 316 Bourdon Tube or Movement to enrich the life-span of the EEPG-50/63.

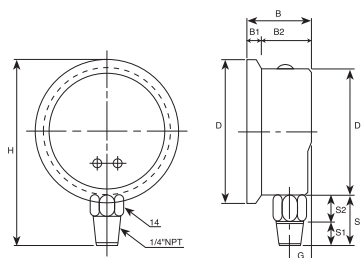
Technical Data

Contact Form:	SPST Form B
Operating Voltage:	24 VDC
Switching Power:	10 VA
Switching Current:	0.42A DC
Carrying Current:	0.42A DC
Operating Time:	1.0 Millisecond
Releasing Time:	0.2 Millisecond
Operating Temperature:	-40°C to +125°C
Storage Temperature:	-50°C to +155°C

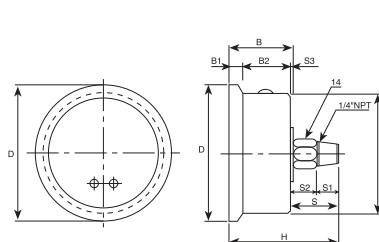
Specifications

Model:	EEPG-50 (Size 2"), EEPG-63 (size 2½")
Mounting:	Bottom, Back, Bottom with Back Flange Back with Front Flange
Ranges:	Positive, Negative (Vacuum), and Compound
Case:	Chrome-Plated Steel Case
Lens:	Acrylic
Pointer:	Aluminum
Tubing:	Standard Brass or Optional SS 316
Movement:	Standard Brass or Optional SS 316
Connection:	Standard Brass or Optional SS 316
Wiring:	Fixed Cable Box
Contact:	High (NO), Low (NC), Fixed Set Pressure by Factory.
Control:	Single or Double Contact(s)
Accuracy:	± 1.5% F.S.
Scale:	psi, bar, kPa, MPa, kg/cm²

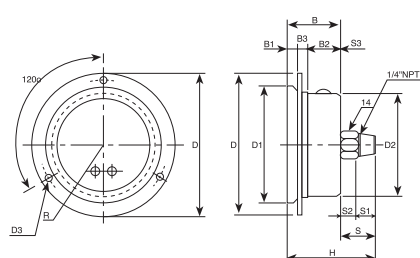
EEPG-50/63 Bottom



EEPG-50/63 Back



EEPG-50/63 Back with Flange



Model	D	D1	D2	D3	B	B1	B2	B3	S	S1	S2	S3	H	G	R
EPPG-50 Bottom	Ø57	Ø53			32	6	26		26	1	12	13	76	10.5	
EEPG-63 Bottom	Ø71.5	Ø63.5			32	7	25		25	12	13		88.5	11	
EEPG-50 Back	Ø57	Ø51			26	6	20		22	1	10	11	48		
EEPG-63 Back	Ø72	Ø63			33	6.7	26.3		25	12	13	1.0	55		
EEPG-50 Back with Flange	Ø70.5	Ø57	51	4	26.7	6.5	15.7	4.5	21	11	10		48		
EEPG-63 Back with Flange	Ø87.5	Ø72	Ø63	Ø4.5	33	6.7	20.5	5.8	25	12	13	1.0	55		40