

Digital Pressure

Gauge / Switch / Transducer

The DPG-75 Digital Pressure Gauge with 1% full scale accuracy uses FTB-developed and patented technology as your cutting edge, cost-saving provider for digital solutions. The FTB-developed technology delivers stable and long-lasting performance. 5 1/2 digit blue backlit LCD makes DPG-75 the largest in window size Digital Pressure Gauge found available on market. The DPG-75 was built for the applications which the cost for digital solutions is highly concerned.

The DPG-75 is rugged and features High Pressure Capture with pressure ranges from vacuum (bar, "Hg, cmHg, mmHg) to 15,000 PSIG (displayed also in bar, kg/cm², MPa, and kPa). An AC power adapter of 100-240 Volts with 50-60 Hz is included for easy installation; also, an DC power of 5-24 Volts is available as an option for DC power input as well. Typical applications include test and measurement in the process industries, hydraulic and pneumatic systems, industrial gases, industrial machinery and machine tools, injection molding machines, stamping and forming presses, and pumps and compressors.

Besides the functions that the DPG-75 has to offer, the DPS-75 Digital Pressure Switch does deliver an additional pressure switch function to the applications which the control of set pressures is needed. Equipped with 8 Pressure Setting Points, the DPS-75 is the most economical digital pressure switch available on market ever.

FEATURES

- $\pm 1\%$ Full Scale Accuracy.
- Ranges from Vacuum to 15,000 PSIG (1,000 kg/cm²).
- Positive Pressures (bar, psi, kg/cm², MPa, and kPa), Negative Pressures ("Hg, cmHg, mmHg, bar).
- 5 1/2 Digit Blue/Green Backlit LCD.
- High Pressure Capture.
- CE Compliant.
- Rugged ABS Plastic Housing with black lacquered.
- Customer Recalibration.
- Zero Offset/Tare.

ACCESSORIES

Pressure Adapters
TO 7/16"-20 SAE Oring Connection.
TO 3/8", 1/2" Connection Adapters.
(Call factory for other fittings.)

SPECIFICATIONS

	DPG-75	DPS-75	PT-75
Accuracy	$\pm 1\%$ Full Scale		
Diameter	3 inches (78 mm)		
Temperature Ranges	Operating/Medium 14°-392° F/-10°-200° C Storage 14°-122° F/-10°-50° C Ambient 14°-167° F/-10°-75° C		
Pressure Ranges	Negative (Vacuum) and Positive through 0-15000 PSI		
Burst Pressure	30% Full Scale		
Engineering Units	Vacuum bar, "Hg, cmHg, mmHg Positive bar, psi, kg/cm ² , MPa, kPa		
LCD Display	5 1/2 Digit LCD, Blue/Green Backlit-0.5 inches high		
Connection	1/4" Male NPT, PT/BSP(T), BSP/PF		
Power Requirement	• Input 100-120 VAC Adapter @ 60 Hz with output 5 VDC @ 1000 mA (included) • Input 220-240 VAC Adapter @ 50 Hz with output 5 VDC @ 1000 mA (included) • Input 5-24 VDC 2-wire wiring (1.5 meters)		Input 24 VDC 3-wire
Wetted Parts	Standard Brass or Optional Stainless Steel AISI 304/316		
Case Material	ABS Plastic with Black Lacquered		
High Pressure Capture	Standard		
Face Membrane	Tactile Feedback Raised Buttons		
Field Calibration	Zero Adjustment		
Output Signal	N/A	5 VDC, 3-9 wires wiring (1.5 meters) depending on numbers of Setting Points/Contacts purchased	Analog 4-20 mA, 3-wire Analog 0-20 mA, 3-wire 0-5 VDC, 3-wire 0-10 VDC, 3-wire
Functional Relay	N/A	1-8 Setting Points/Contacts depending on numbers of Setting Points/Contacts purchased Input 24 VDC required	N/A
Pressure Setting Points Contacts	N/A	1-4 Highs 1-4 Lows Standard 1 High or Low	N/A



Model DPS-75



Model DPS-75
Lower Back Mount



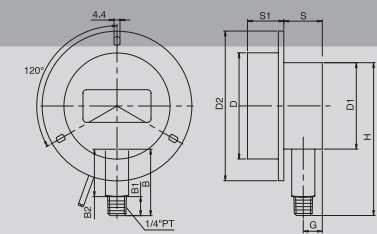
Model DPG-75

PRESSURE RANGES (PSI) / KG	MAXIMUM SAFE OVER PRESSURE (PSI) / KG See note (+) below for details.	INCREMENTAL DISPLAY STEPS (PSI) / KG
(0-15)/1	19.5/1.3	.10/0.006
(0-30)/2	39.0/2.6	.20/0.013
(0-40)/3	52.0/3.9	.26/0.02
(0-60)/4	78.0/5.2	.40/0.026
(0-100)/7	130.0/9.1	.66/0.046
(0-140)/10	182.0/13	.93/0.06
(0-200)/15	260.0/19.5	1.30/0.1
(0-280)/20	364.0/26	1.86/0.13
(0-350)/25	455.0/32.5	2.33/0.16
(0-500)/35	650.0/45.5	3.33/0.23
(0-570)/40	741.0/52	3.80/0.26
(0-700)/50	910.0/65	4.66/0.33
0-1,000 (1K)/70	1,300.0/91	6.66/0.46
0-1,400 (1.4K)/100	1,820.0/130	9.33/0.66
0-2,100 (2.1K)/150	2,730.0/195	14.00/1
0-2,800 (2.8K)/200	3,640.0/260	18.66/1.33
0-3,500 (3.5K)/250	4,550.0/325	23.33/1.66
0-4,200 (4.2K)/300	5,460.0/390	28.00/2
0-5,000 (5K)/350	6,500.0/455	33.33/2.33
0-5,700 (5.7K)/400	7,410.0/520	38.00/2.66
0-7,000 (7K)/500	9,100.0/650	46.66/3.33
0-8,500 (8.5K)/600	11,050.0/780	56.66/4
0-10,000 (10K)/700	13,000.0/910	66.66/4.66
0-15,000 (15K)/1000	19,500.0/1300	94.66/6.66

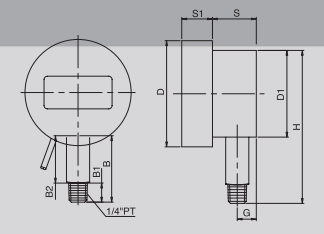
* Maximum Safe Over Pressure is the pressure which the unit can experience occasionally without loss of accuracy of permanent damage.

DIMENSIONS

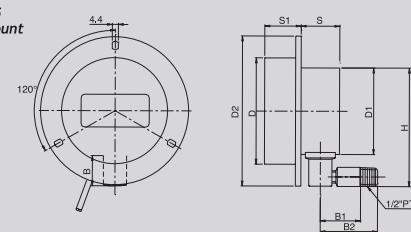
DPG-75/DPS-75 with Flange



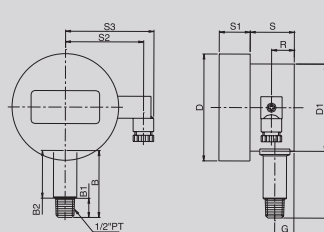
DPG-75/DPS-75



DPG-75/DPS-75 Lower Back Mount



PT-75



Model	D	D1	D2	B	B1	B2	S	S1	S2	S3	R	G	H
DPG-75/DPS-75 with Flange	78	63.5	110	49	14	35	28.3	26.7				14	112.3
DPG-75/DPS-75	78	63.7		49	14	35	32.2	22.6				14	112.4
DPG-75/DPS-75 Lower Back Mount	78	63.5	110	22	29.5	42	28.3	26.7				14	112.3
PT-75	78	63.5		49	14	35	32.2	22.6	57	64.5	16.6	14	112.4