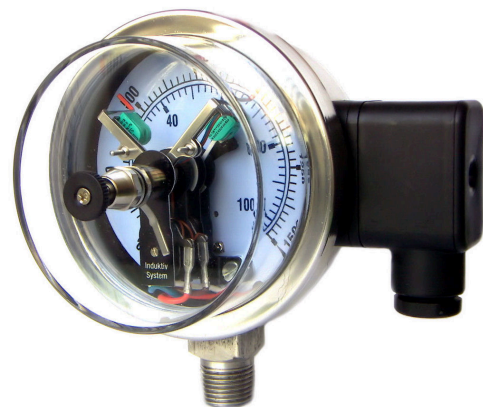


# PRESSURE GAUGE WITH INDUCTIVE CONTACT

MODEL: IPG-100

## SPECIFICATIONS

Inductive contacts make or break an electric control circuit depending on the position of the instrument's pointer. Points of contact actuation are adjustable over the full extension of the scale graduation. The gauges feature a hub in the window for an adjustment key. Contact actuation is made when there is an upper or lower deviation of the set desired value by the instrument pointer. Due to the proximity type of switching, the switching accuracy and the high service life, inductive contacts may be used for almost all industrial applications and should be given special performance for oil filled measuring instruments and in areas under a risk of an occasional explosive atmosphere.



IPG-100

## GENERAL CHARACTERISTICS

### NOMINAL DIAMETERS (mm)

100 (DN100)

### ACCURACY

±1,0% F.S. Accuracy

### POINTER

Black Aluminum

### RING

Bayonet Lock, Stainless Steel AISI 304 with Antitampering Sealing

### RANGES

Vacuum & Compound Gauges

### CALIBRATION PRESSURE

Refer to Order Specifications

### INDUCTIVE CONTACTS

Adjustable Contacts with Antitampering Sealing:  
-Inductive Slot Sensors: SJ 2 N (Standard), SJ 2 SN (Safety Sensors)  
-Contact Available: Up to 2 Inductive Contacts

### WINDOW

PC Lens

### MOVEMENT

Stainless Steel AISI 316 from Germany

### DIAL

White Aluminum with Black Markings and Colors Sectors as per Customer's Specification

### WEIGHT

1.2 KG

## TECHNICAL FEATURES

### AMBIENT TEMPERATURE

-20...+60°C

### CASE

Fully Welded Stainless Steel AISI 304  
Optional Filled with Silicone Oil

### PROTECTION DEGREE

IP 65 as per EN 60 529 / IEC 529

### STORAGE TEMPERATURE

-50...+60°C

### PROCESS CONNECTION

Fully Welded Stainless Steel AISI 316  
M20 x 1,5 or 1/2" PT, NPT Threads  
G½B Thread (EN 837), SW22

### BOURDON TUBE

Stainless Steel AISI 316 from Germany

## ELECTRICAL CONNECTION

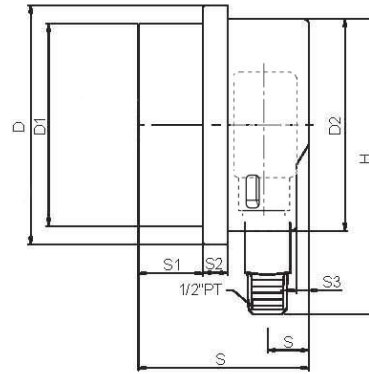
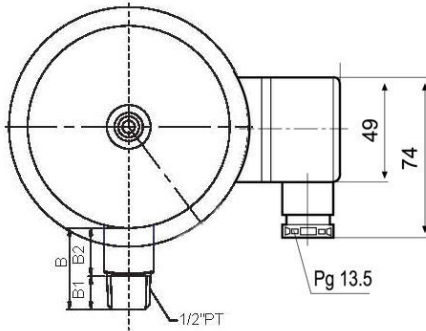
Junction Box with Cable Gland  
M20 x 1,5 – PG 13,5 (2,5 mm<sup>2</sup>)

## OPTIONS & ACCESSORIES

Junction Box on the Left

Removable Junction Box – PG13,5

## DIMENSIONS (MM)



### DIMENSIONS (MM)

Single/Double Contacts with Isolating Layers

Triple Contacts with Isolating Layers

	D	D1	D2	B	B1	B2	S	S1	S2	S3	G	H
Single/Double Contacts with Isolating Layers	115	97	101.6	34	16	18	82	31	12	6	20	141.5
Triple Contacts with Isolating Layers	115	97	101.6	34	16	18	82	31	12	6	20	141.5

## TECHNICAL DATA (SJ 2 N Slot Sensors):

Electrical Version: DC Voltage, 2-wire to DIN 19 234 (NAMUR)

Nominal Voltage: 8 V=(Ri approx. 1K Ohm)

Operating Voltage: 5-25 VDC

Current Consumption:  $\geq 3$  mA (active face uncovered)  
 $\leq 1$  mA (active face covered)

Switching Accuracy: Approx. 0.5% of the full scale value

Ambient Temperature: -20°C to +70°C

## NOMINAL DATA (SJ 2 N Slot Sensors):

Switching Point with Fe Test Plate: Approx. 60% Insert Depth

Repeatability Accuracy R:  $\leq 0.01$  mm

Switch Hysteresis H: 0.05 to 0.2 mm

Testplate (Min. Dimensions Fe and non Fe): 5 mm x 8 mm x 0.5 mm

Working Voltage: 5-25 VDC

Residual Ripple:  $\leq 5\%$

Switching Frequency: 5kHz

Protection Class to DIN 40 050: IP 67

Permissible Shock and Vibration (To IEC 68-2-6 and IEC 68-2-27): Accel  $\leq 30g$ , T  $\leq 11$  ms, f  $\leq 55$  Hz, a  $\leq 1$  mm

Method of Connection (The cable has to be fastened permanently when ambient temperature is above 80°C): 0.5 m,

Mini-Flat-Cable, 0.06 mm<sup>2</sup>.