



# BI-METAL DIAL THERMOMETERS

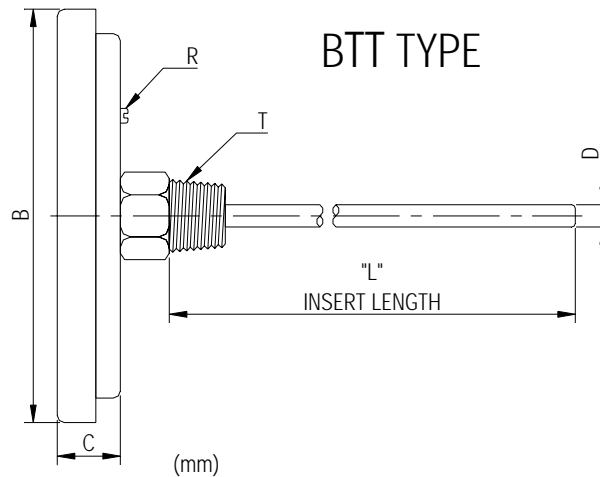
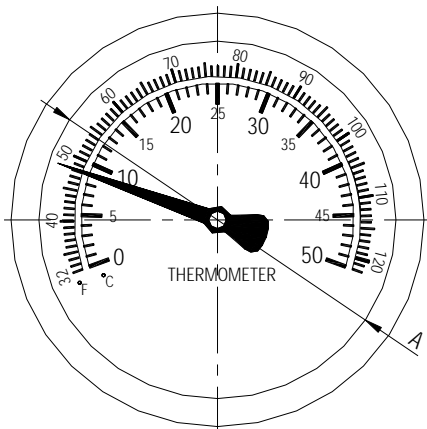
## BTT(T) TYPE



Note:

When ordering specify

- 1.Type No.
- 2.Case Dial.
- 3.Temperature Range.
- 4.Connection.
- 5.Stem Dial.
- 6.Stem Length.



Type No. Symbol	A	B	C	D	L	T
BTT2	49	58	14	6	by order	1/4"PT
BTT3	70	84	17	6.35		3/8"PT
BTT4	100	119	18	8		1/2"PT
BTT5	125	141	18	10		3/4"PT
BTT6	150	166	18	12		

### Specifications.

1. Case Material:304 、 316 s.s.
2. Case Dial:1.5"Ø 、 2"Ø 、 2.5"Ø 、 3"Ø 、 4"Ø 、 5"Ø 、 6"Ø
3. Stem Material:304 、 316s.s.
4. Temperature Range:-50 ~ 600°C
5. Windows:Glass.
6. Connection:1/4"PT 、 3/8"PT 、 1/2" PT 、 3/4"PT 、 1"PT
7. Stem Length:By order.
8. Stem Dial:6mm 、 6.35mm 、 8mm.
9. Accuracy:± 1%F.S..
10. Type:BTT TYPE
11. Applications:Transformer 、 petrochemicals 、 driers 、  
foods 、 air conditioning equip 、 boilers & other general industrial uses.