

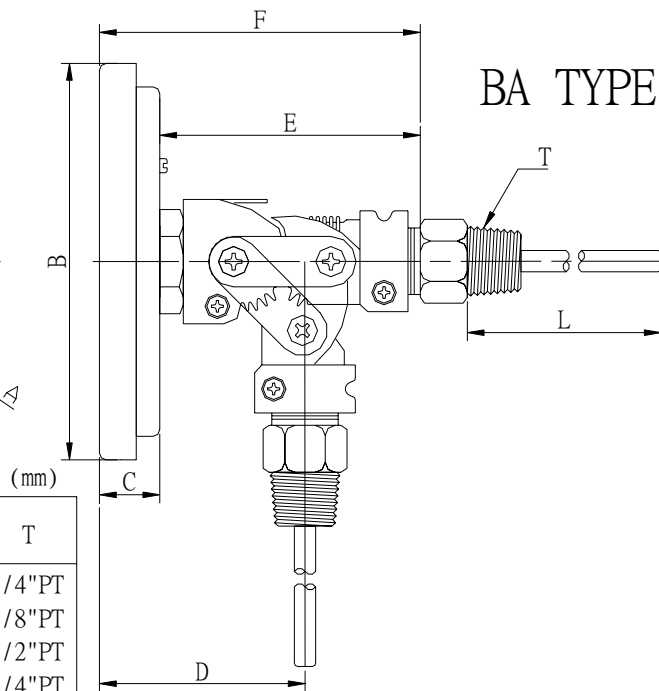
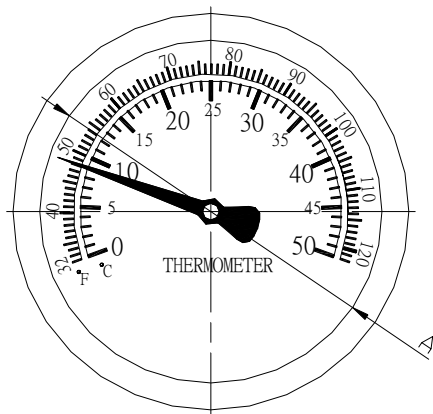


# BI-METAL DIAL THERMOMETERS

## BTA(A) TYPE ADJUSTABLE



Note:  
 When ordering specify  
 1.Type No.  
 2.Case Dial.  
 3.Temperature Range.  
 4.Connection.  
 5.Stem Dial.  
 6.Stem Length.



Type No.	A	B	C	D	E	F	T
BA3	75	91	18	60	75	93	1/4"PT
BA4	100	119	18	60	75	93	3/8"PT
BA5	125	141	18	60	75	93	1/2"PT
BA6	150	166	18	60	75	93	3/4"PT

### Specifications.

- Case Material:304SS、316SS
- Case Dial: 3"Ø、4"Ø、5"Ø、6"Ø
- Stem Material:316SS
- Temperature Range:-50~600°C
- Dial Color:Black figure on non-glaring white dial
- Hermetic sealed case:Yes.
- Enclosure class:IP65.
- Windows:Safety Glass.
- Connection:1/2" NPT
- Stem Length:By order.
- Accuracy:±1%F.S..
- Stem Dial:6mm、6.35mm、8mm.
- Type:BTA TYPE
- Applications:Transformer、petrochemicals、driers、foods、air conditioning equip、boilers & other general industrial uses.